



Wide turndown up to 1:120 with no pressure loss



Fully welded and trunnion mounted (DN 80 and greater)



Closed-loop system independent of gas consumption and weather



Used to calibrate and verify natural gas meters



## USM & Test Facility

RMA

# German Technology

### ECOSONIC X12

- Used for gas transportation, storage, distribution and industrial use.
- Uses six independent measuring paths to determine the flow factors such as the swirl and asymmetry.
- Cost-effective solution has wide turndown up to 1:120 with no pressure loss.



### Ball Valve

- Economical, simple, robust and effective alternative.
- Designed for the media gas and oil.

### High Pressure Test Facility

- Used to calibrate and verify natural gas meters.

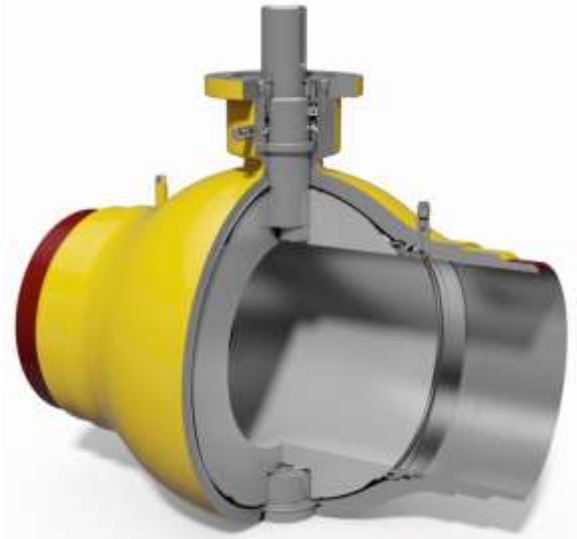


**PRODUCTS**



## What is RMA?

RMA, a market leader in German-speaking countries, is renowned for its first-class products and highly skilled employees, driving customer success worldwide. Committed to innovation, quality, and efficiency, RMA focuses on delivering complete solutions tailored to customer needs. To expand its presence in the Indian Hydrocarbon Industry, RMA has partnered with Eximp Measurement Private Limited (EMPL). Together, we aim to establish new sales offices, enhance local production facilities, and develop advanced products. EMPL proudly supports RMA's patented innovations, including the High-Pressure Calibration Facility, Ultrasonic Flowmeter, Opening End Closure & Ball Valve HKSF, ensuring exceptional performance in process operations.



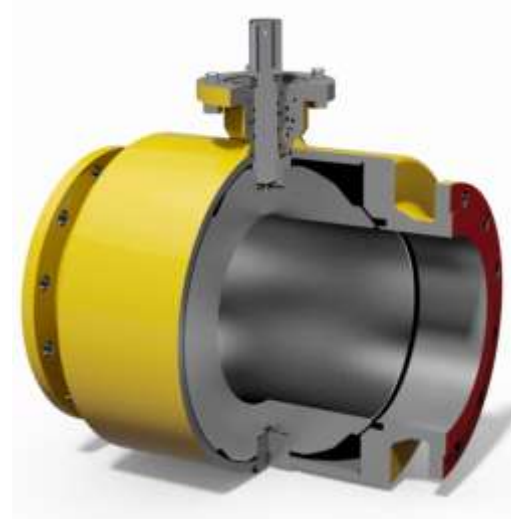
**Ball Valve HKSF-W100**  
DN 15 - DN 1400, up to 250 bar



**Ball Valve HKSF-SB**  
DN 25 - DN 1400, up to 420 bar



**Ball Valve HKSF-WB**  
DN 25 - DN 1400, up to 420 bar



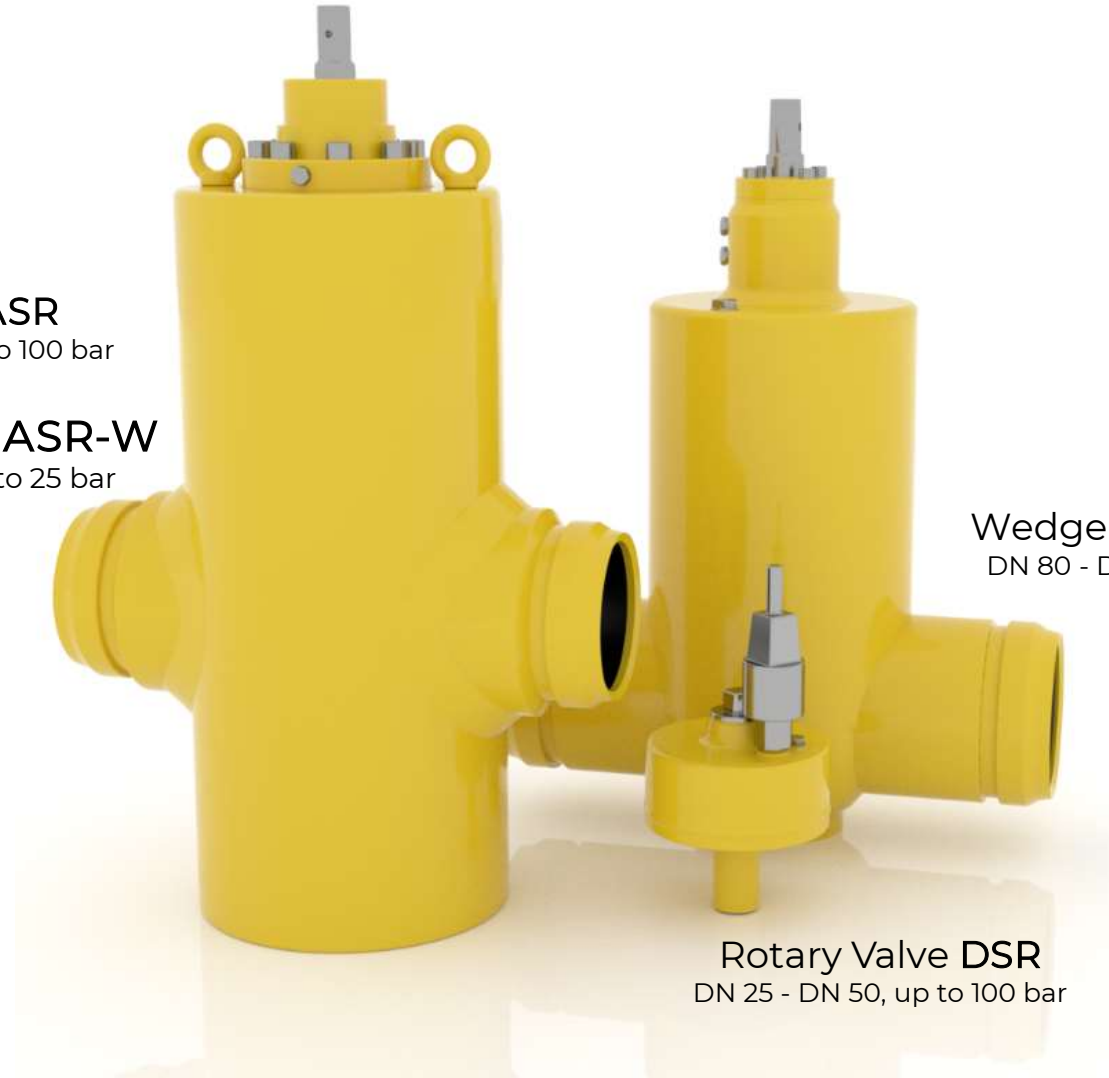
**Ball Valve HKSF**  
DN 25 - DN 400, up to 50 bar

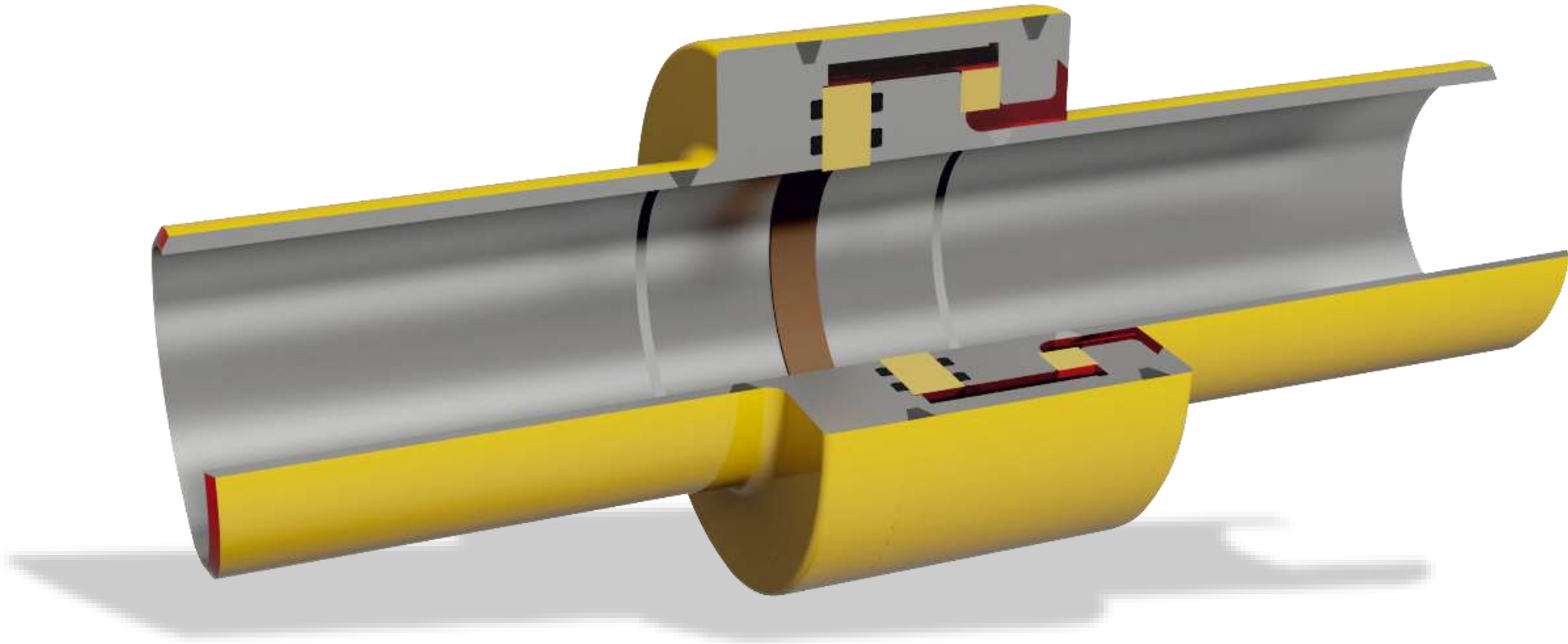
Gate Valve **ASR**  
DN 50 - DN 400, up to 100 bar

Gate Valve Soft **ASR-W**  
DN 50 - DN 300, up to 25 bar

Wedge Gate Valve **KSR**  
DN 80 - DN 400, up to 100 bar

Rotary Valve **DSR**  
DN 25 - DN 50, up to 100 bar





Isolating Joint IK & IKL  
DN 15 - DN 2100, up to 420 bar

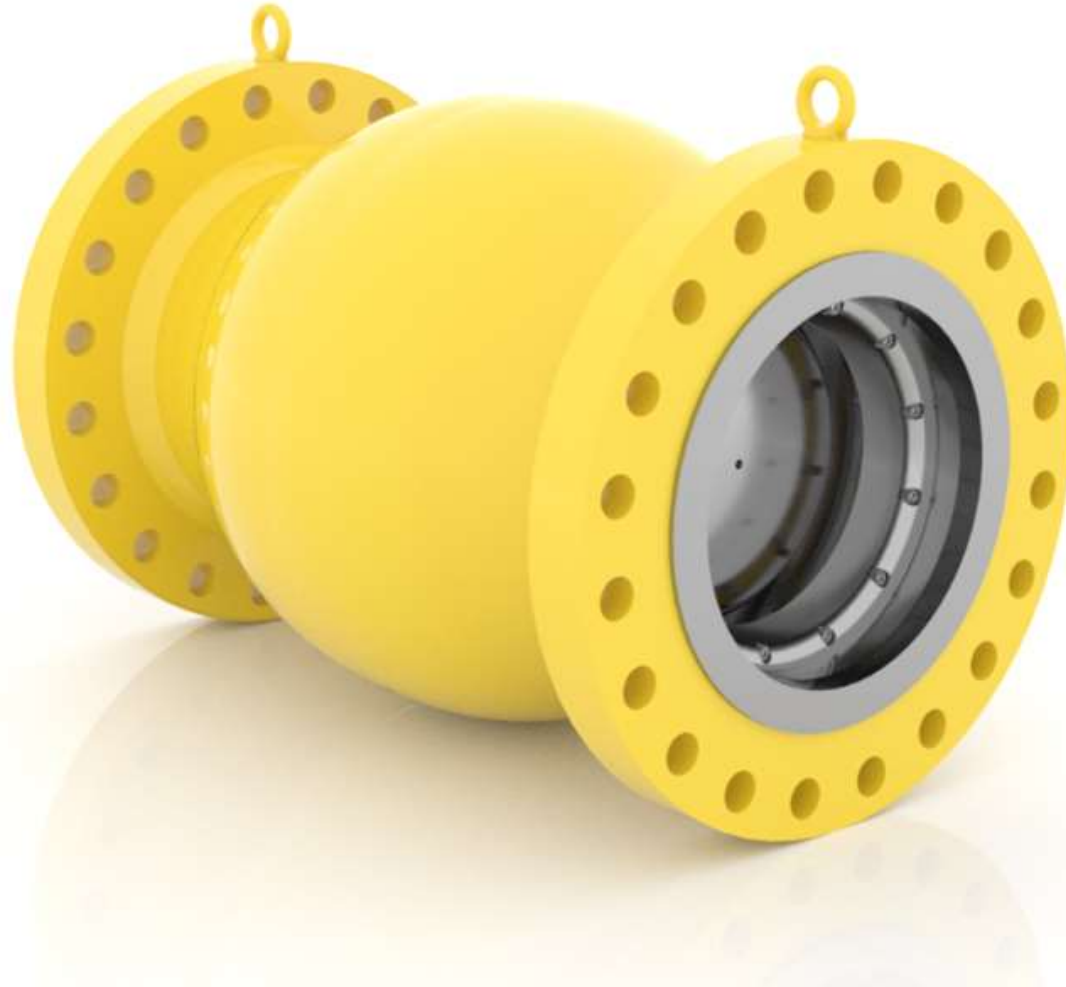


Scraper Traps  
DN 100 - DN 1600, up to 250 bar



Tee  
DN 100 - DN 1400, up to 250 bar





**Check Valve CKR**  
DN 25 - DN 1400, up to 250 bar



**Actuators NWS**  
Up to 200.000 Nm



House Connection Gas



House Connection Gas



House Connection Water



Ultrasonic meter EcoSonic X12



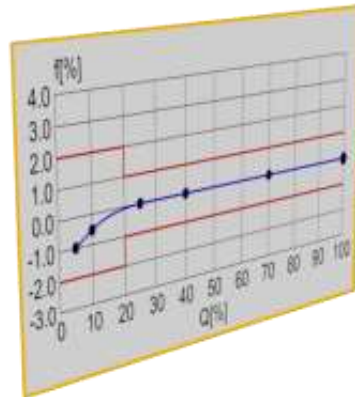
Gateway EcoGate



Software EcoSuite



EVC (by FTL)



Calibration facility



Rotary piston meter EcoRPM

## High Accuracy Device

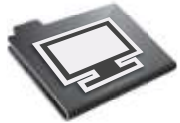
Market launch:	2011
Characteristics:	6 independent measurement paths on 3 levels Qmin/Qmax 1:100 (DN 80 = 1:80) Ambient temperature -25°C/+55°C Bidirectional usage Full bore available
Production site:	Rheinau
Approvals:	MID 2004/22/EG (MID 2014/32/EU in 2017) Pressure Equipment Directive 97/23/EG EMV Directive 89/336/EWG OIML R137 Class 0.5
Dimensions:	DN 80 - DN 600
Pressure class:	up to ANSI 600 (PN 100)
Connections:	2 HF pulse out, Modbus, Encoder, DSfG Instanz F
Display:	Touch screen, 9 lines
Parameterization:	Software EcoView, also via TCP/IP
Lead time:	8 weeks (depends on size and quantity)



# Software EcoSuite Metering

Monitoring, analyzing and reporting your gas metering stations

## EcoSuite-Monitoring



The perfect on-site solution, providing a comprehensive overview of your system. It includes measured value archives, logbooks, trend displays, centralized status views, dashboards, and a device list. This software package is designed for accessing individual systems, which can also be accessed remotely with the proper permissions. Optional features include alarm and reporting functionalities upon request.

## EcoSuite-Service



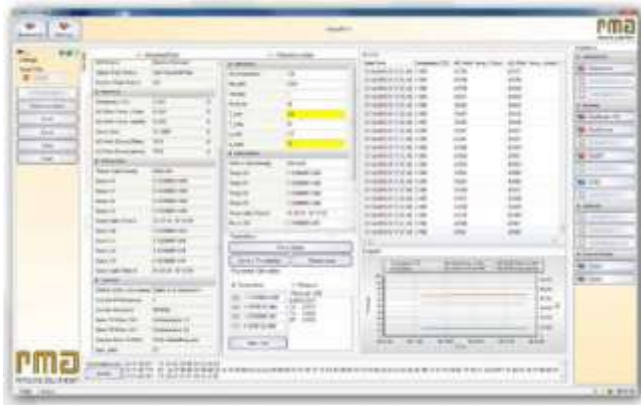
The perfect tool for your service team, offering seamless access to all your stations. With a single click on a station name, you can view essential details like nameplate data, documents, and even live values (if a connection is available). The monitor is a key component, along with measured value archives, logbooks, trend displays, centralized status views, and the dashboard. Additionally, a wide range of extensions is available, allowing you to customize the system to your specific needs.





# Software EcoSuite Metering

Monitoring, analyzing and reporting your gas metering stations



## EcoSuite-ZFA

We have developed a remote meter reading solution using an intelligent combination of modules and functions.

The station and device base form the foundation of this system. Calls are initiated through the integrated scheduler, monitored via call control, and can be reviewed and analyzed using data visualization tools.

Additional features, such as the database manager, alarm function, or call status, can be added to enhance the value of the ZFA.

## EcoSuite-Reporting



Upon request, EcoSuite-Report generates fully automated reports in various standard formats, such as XLS and PDF. It allows for effortless implementation of your ideas or existing templates, with the ability to combine data from multiple devices and stations.

Excel templates provide the perfect foundation for creating daily or monthly reports, complete with your own logo and custom design. Let your creativity shine—we provide the tools to make it happen.



## Rotary Piston Meter

From Aerzen to Rheinau.



<b>Market launch:</b>	1930
<b>Characteristic:</b>	Robust body made of spheroidal graphite cast iron HTB-approval up to 5 bar, up to G400
<b>Production site:</b>	Rheinau
<b>Approvals:</b>	MID 2004/22/EG (MID 2014/32/EU in 2017) Pressure Equipment Directive 97/23/EG EMV Directive 89/336/EWG
<b>Dimensions:</b>	G40 up to G4000
<b>Pressure class:</b>	PN 10 & PN 16
<b>Connections:</b>	Impulse & Encoder (additional device)
<b>Lead time:</b>	8 weeks (depends on size and quantity)

## High Pressure Test Facility

State & ISO 17025 approved

- Capable of handling flow rates up to 13,000 m<sup>3</sup>/h.
- Operates at pressures ranging from 1 bar absolute to 51 bar absolute.
- Features a closed-loop system, independent of daily gas consumption.
- A state-approved facility for calibrating gas meters.
- Accredited according to ISO/IEC 17025:2018 standards.



- Pressure range: 1 bar absolute to 51 bar absolute.
- Flow capacity: 3 m<sup>3</sup>/h to 13,000 m<sup>3</sup>/h.
- Accommodates diameters from DN 50 to DN 500.
- Equipped with master meters:
  - 1= 2 x G 4000 TRZ
  - 2= G 650 TRZ
  - 3= G 100 S-Flow
- Testing performed with natural gas under real-world conditions.
- Utilizes a closed-loop system for operation.
- Adjustable pressures and flow rates across the entire measurement range.
- Ensures consistent gas quality throughout testing.
- Includes two parallel metering lines, each exceeding 12 meters in length.
- Supports all flange sizes, from PN 10 to ANSI 600.



- State-approved calibration facility for gas meters
- Accreditation according ISO/IEC 17025:2018





# THANK YOU

## Eximp Measurement Private Limited Our Contact

Contact us today to find your perfect solution.



### Registered Office

426, Mandakini Enclave  
Alaknanda, New Delhi  
South Delhi-110019



### Phone & Email

+91 020 27654694  
empl@eximpinc.com



### Operations

Sector-10 Plot No 145 &146,  
PCNTDA, Bhosari Pune-  
411026  
Maharashtra India



### Projects Office

1st Floor, Plot No. 17, Sangath  
Bungalows, Off Sama Savali  
Road, Vadodara – 390008